



Quick Reference

Firmware Update Guide for LUCON® 2



Issue date:
Revision:

April 19, 2023
1.1

Short description

The LUCON® 2 controllers have a mechanism for updating the built-in firmware. This allows new features to be introduced to the controllers. An automatic over-the-air update is not possible. Updates must be performed manually by the user.

For a better understanding: There are two microcontrollers in the LUCON® 2 Master: one for communication and one for the power stage. In the LUCON® 2 Slave, however, there is only one control for the power stage. Both types of controllers can be upgraded independently.

An update requires access to the internal web server. This means that firmware can only be updated for applications that use the Ethernet interface.

Identification

Article No.	00039600	LUCON® 2 Master
	00039601	LUCON® 2 Slave

Copyright

The information contained in this documentation is part of the transfer of product know-how and is intended exclusively for use by the user. Copying or other types of duplication and sharing with third parties is not permitted without the express written permission of the company GEFASOFT Automatisierung und Software GmbH.

We do not guarantee the absolute completeness or correctness of the information provided herein. Despite our best efforts, the documents may contain errors or omissions. We are therefore always grateful for any suggestions regarding the improvement or completion of the informational content of this documentation.

© 2023 GEFASOFT Automatisierung und Software GmbH – All rights reserved

MANUFACTURER



Automatisierung und Software GmbH Regensburg
Franz-Mayer-Str. 10 / 93053 Regensburg

Phone: +49(0)941 78830 - 0 / Fax +49(0)941 78830 - 66
info@gefsoft.com www.gefsoft.com

SERVICE AND SUPPORT

Tel. +49(0)941 788 30-33

lucon@gefsoft.com

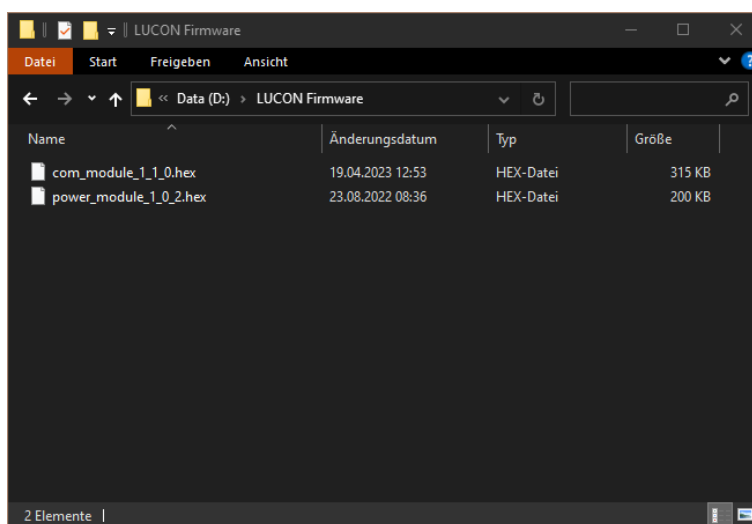


1 Get the latest firmware

The latest firmware is always available on the LUCON® website. For the LUCON 2, the files can be found here (Under the tab "Downloads" and then in the "Firmware" subitem):

<https://lucon.io/controller/lucon2/>

The files on the website are offered as ZIP archives. In order to transfer them to LUCON® 2, the ZIP archives must first be unpacked. Under Windows this can be done directly with the Windows Explorer. Alternatively, various programs and tools are available on the Internet.

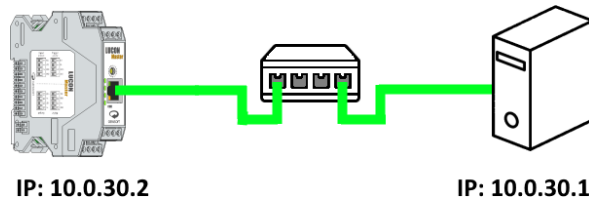




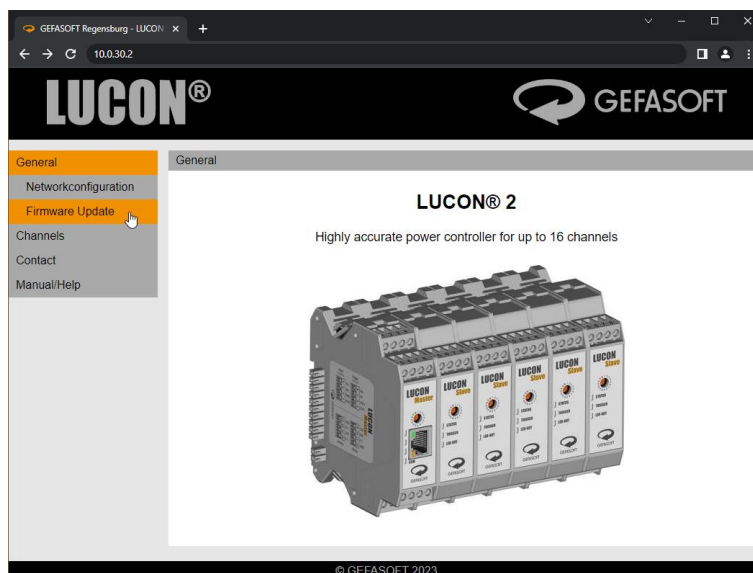
2 General preparations

Caution: There is always a risk associated with a firmware update. For example, in the event of a power failure, the devices may be damaged beyond repair. An update should only be performed if necessary. If you have any questions or problems with an update, please contact GEFASOFT Automatisierung und Software GmbH. We will be happy to help you.

The LUCON® 2 Master module can be connected to a computer either directly or via a switch. It is important that the IP address of the computer is in the same subnet (e.g. 10.0.30.1, subnet: 255.255.255.0).



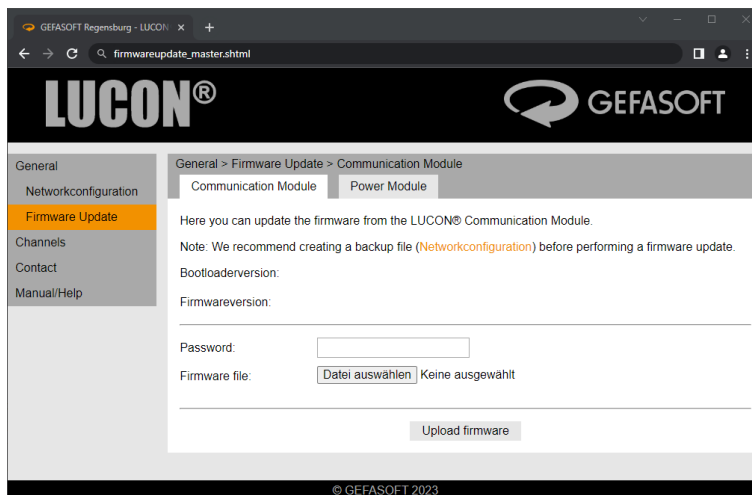
In a browser, enter the address of LUCON® 2 (10.0.30.2) in the address line. The configuration website opens. Then click on "Firmware Update" in the menu on the left:





3 Update the communication controller firmware

Select "Communication Controller" from the top menu. The following page will be displayed:



The password for protection is:

a

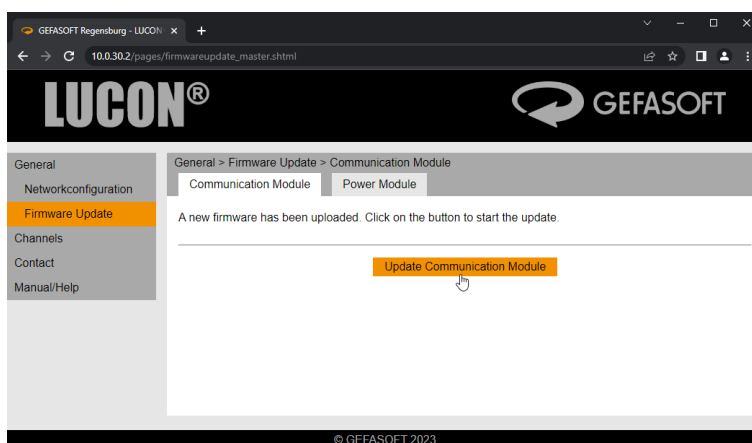
The file must be of type *.hex and the name must be structured according to the following scheme:

com_module_x_y_z.hex

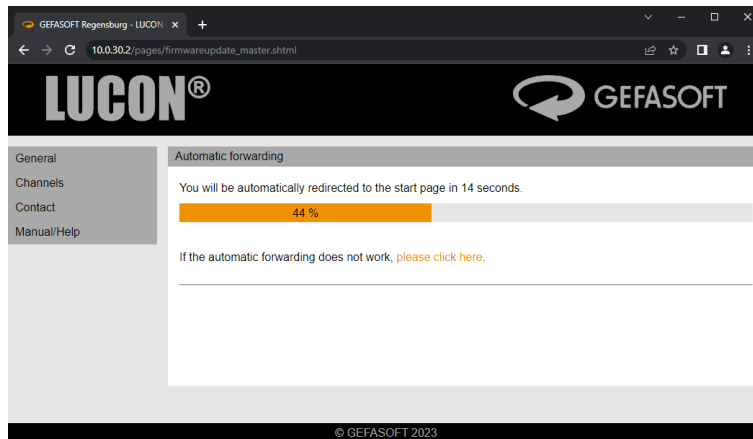
x, y and z represent the firmware version and can look like 1_0_0.

Then click on "Upload firmware" to transfer the file to the controller (**but it will not be installed yet**).

The file will now be checked and after a few moments it will be automatically forwarded. The update process can now be started by clicking on "Update Communication Module":



The update will be completed in about 1 minute. During this time the communication controller will be restarted several times.

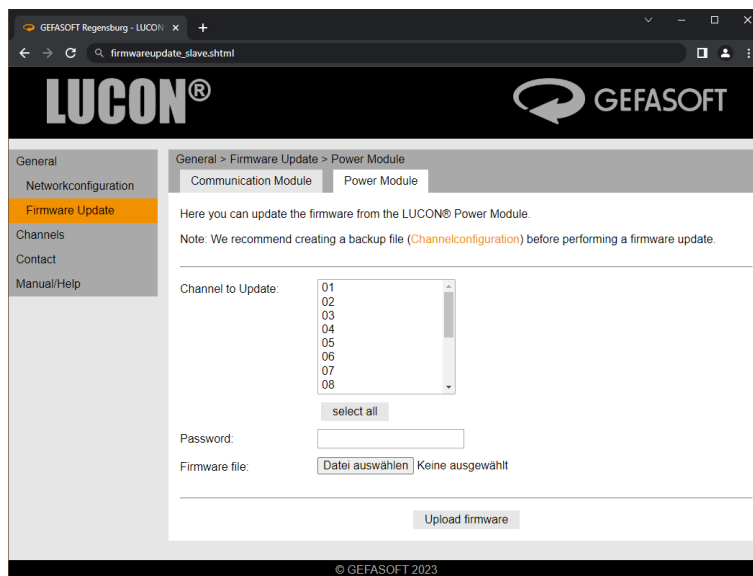


As long as the update is active, the "COM" LED on the LUCON® 2 Master will flash in blue.

4 Update the power controller firmware

Caution: To perform the update as shown below, the Communication Controller must have at least firmware 1.2.0 installed!

Select "Power Controller" from the top menu. The following page will be displayed:



First select the channel you wish to update. Multiple selections are possible by holding down the "CTRL" key.

The password for protection is:

a

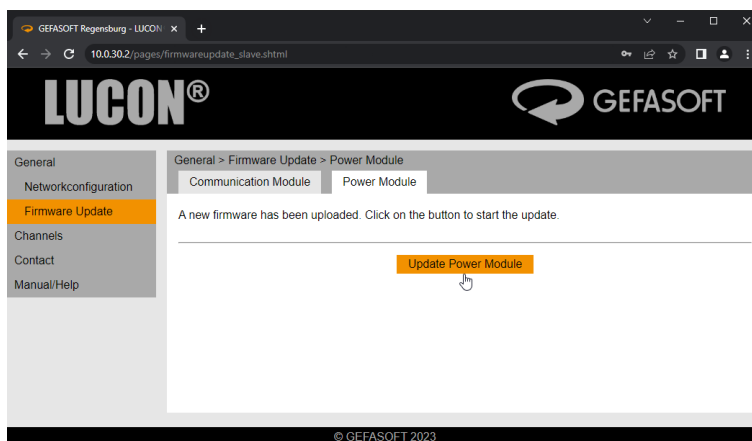
The file must be of type *.bin and the name must be:

power_module_x_y_z.hex

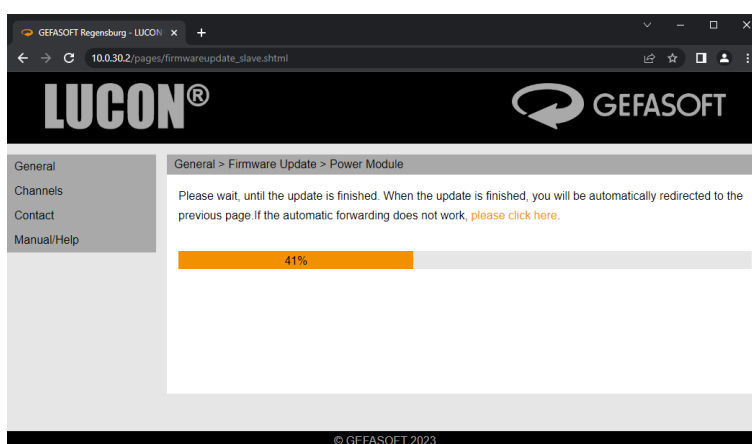
x, y and z represent the firmware version and can look like 1_0_0.

Then click on "Upload firmware" to transfer the file to the controller (**but it will not be installed yet**).

The file will now be checked and after a few moments it will be automatically forwarded. The update process can now be started by clicking on "Update Power Module":



Each channel takes about one minute to update.



As long as the update is active, all three LEDs on the affected channel flash blue.